

Analysis of the feedback received from Alumni

Set I of questions (rating type)

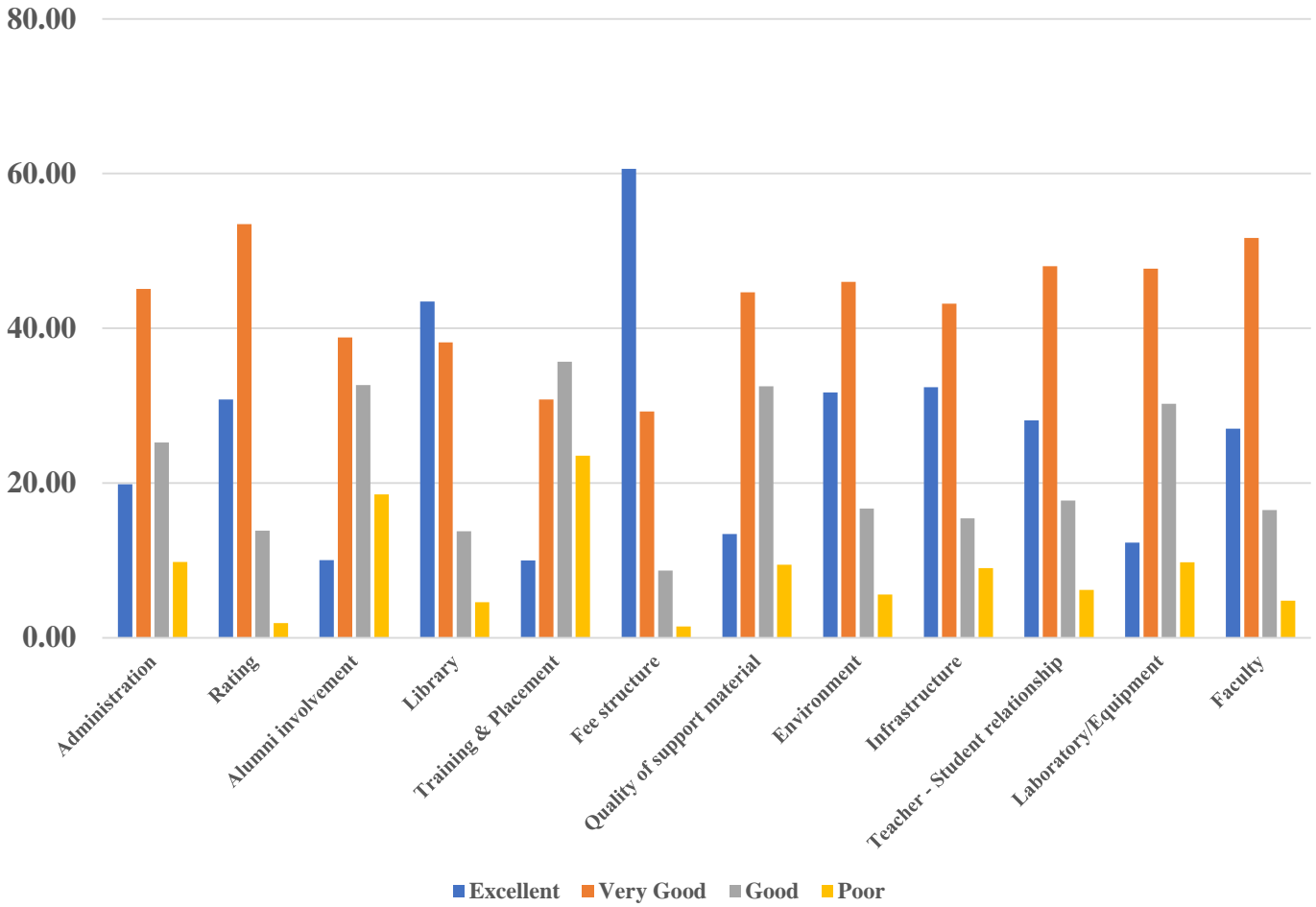
Feedback about	Excellent	Very Good	Good	Poor
Administration				
Rating of University				
Alumni involvement				
Library facilities				
Training & Placement				
Fee structure				
Quality of support material				
Environment				
Infrastructure				
Teacher - Student relationship				
Laboratory/Equipment				
Faculty				

Set II of questions (Yes/No type)

Question	Yes	No
Would you be interested in giving inspirational talk to your juniors?		
Is there a need to improve Teaching/Learning?		
Would you be interested in sharing your experience with university students?		
Have you participated in any Alumni meet?		
Would you like to keep contact with your Department/Centre?		
Are you willing to contribute to the development of Department/Center/University?		
Do you feel proud to be Alumnus/Alumna of JMI?		
Were you getting any scholarship/stipend while study in JMI?		

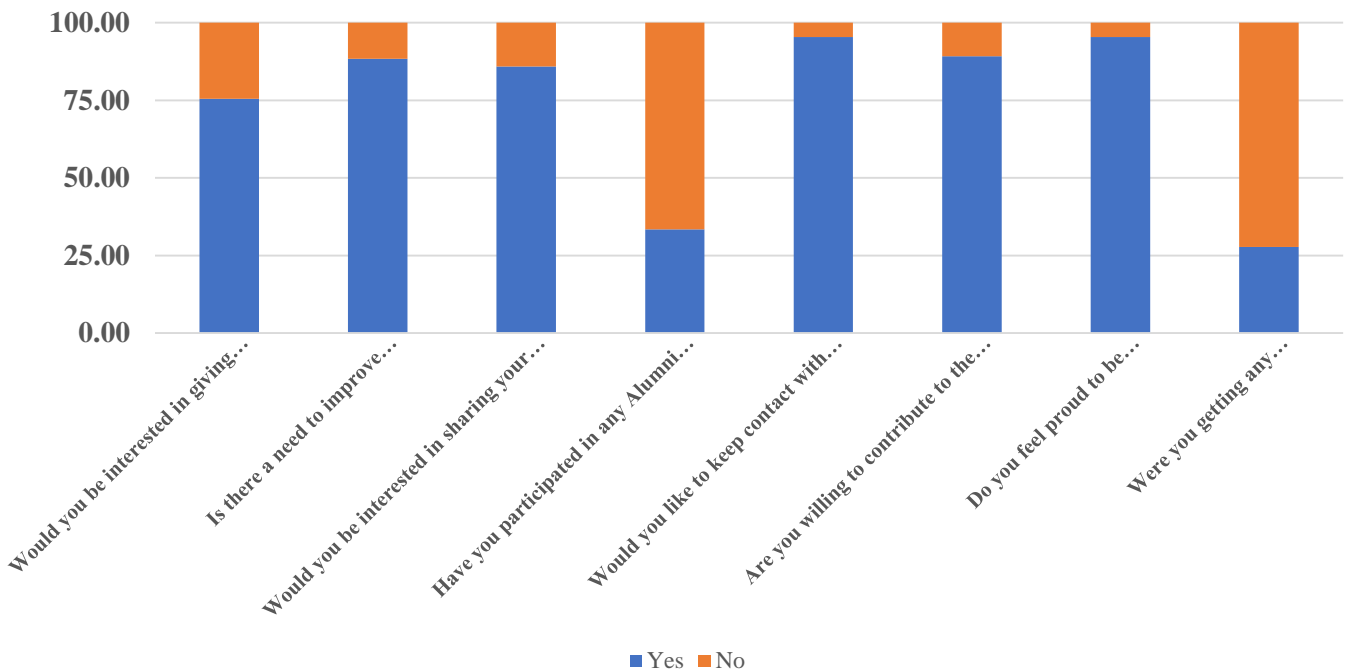
Set-I

Overall (University)



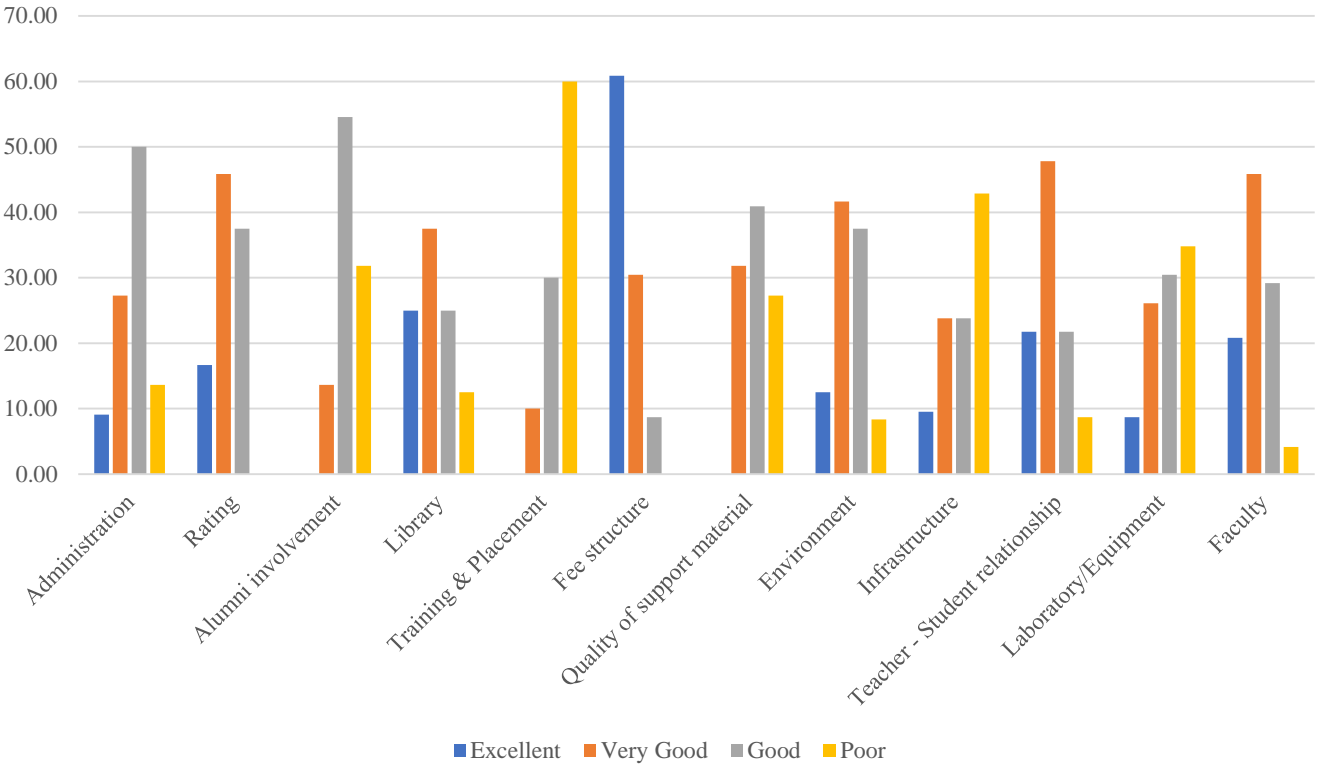
Set-II

Overall (University)



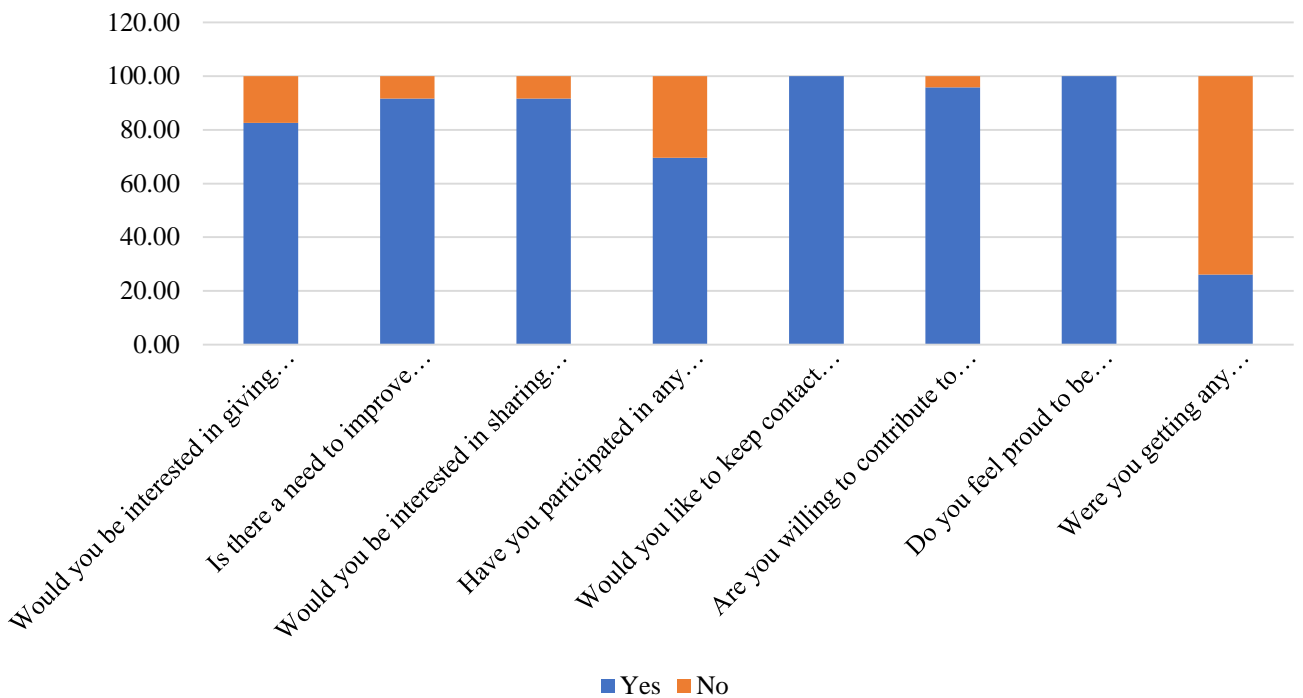
Set-I

Department of Social Work



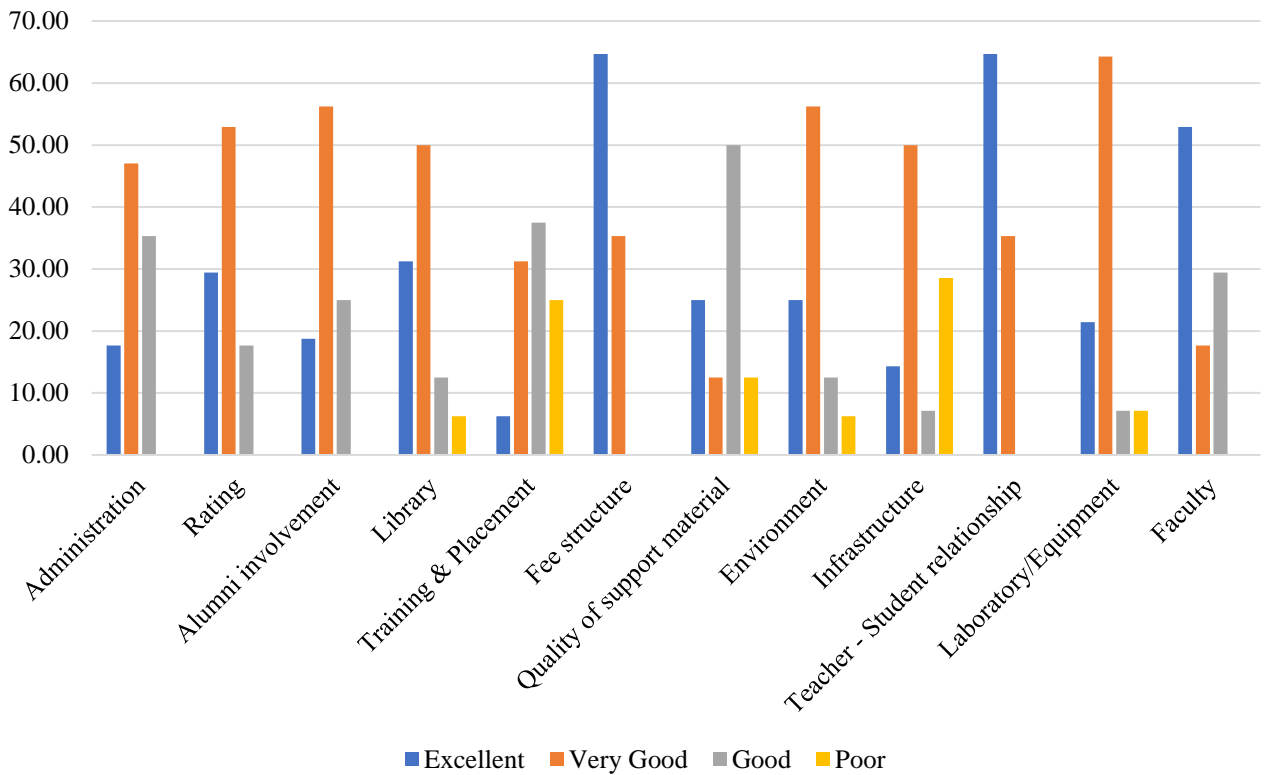
Set-II

Department of Social Work



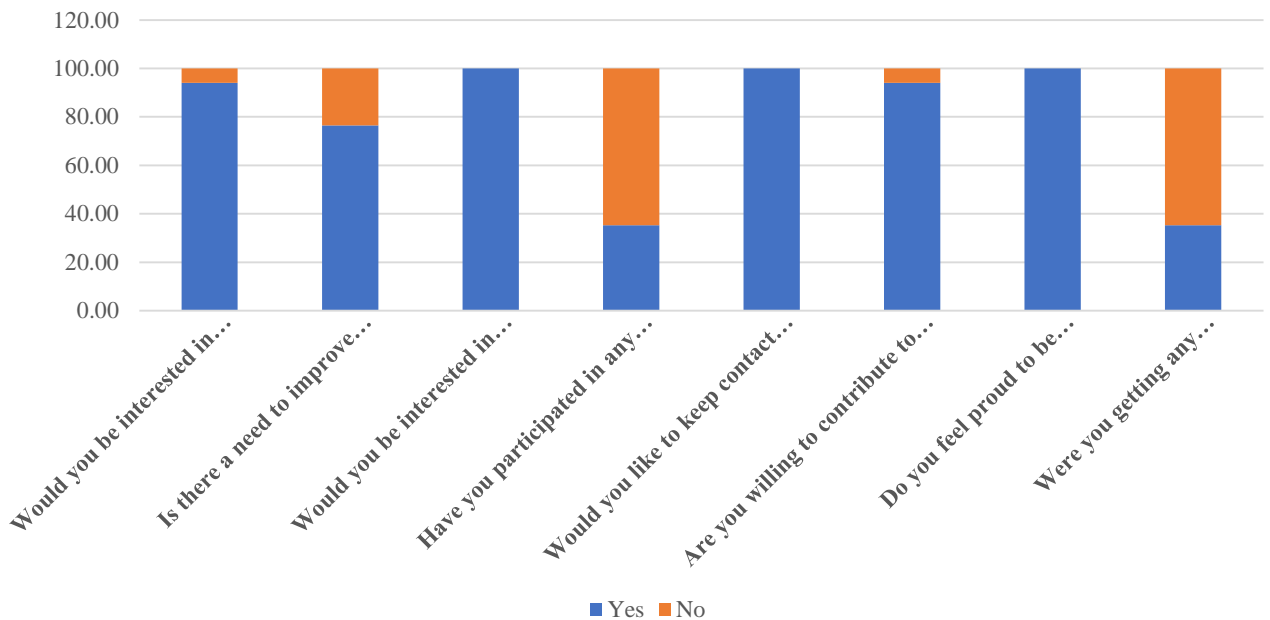
Set-I

Department of Sculpture



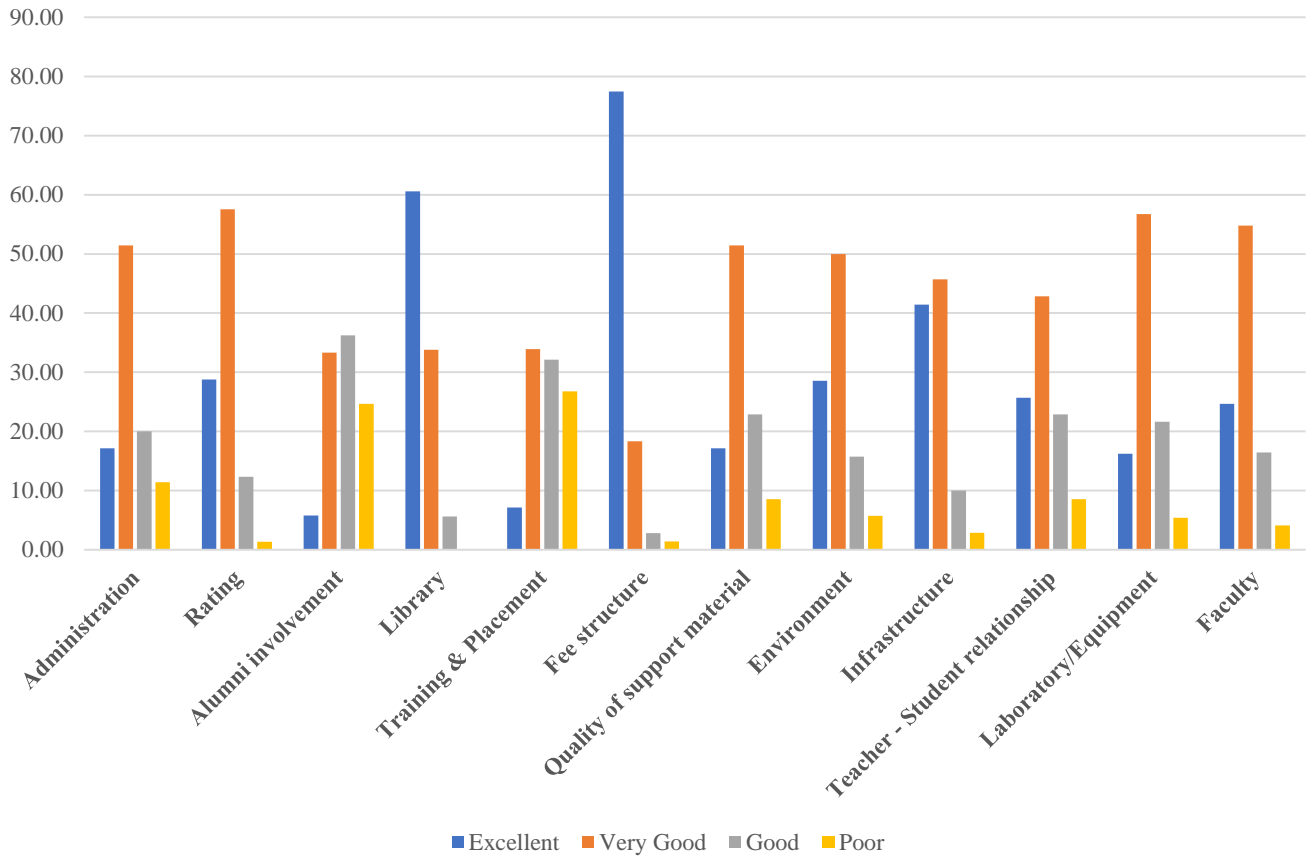
Set-II

Department of Sculpture



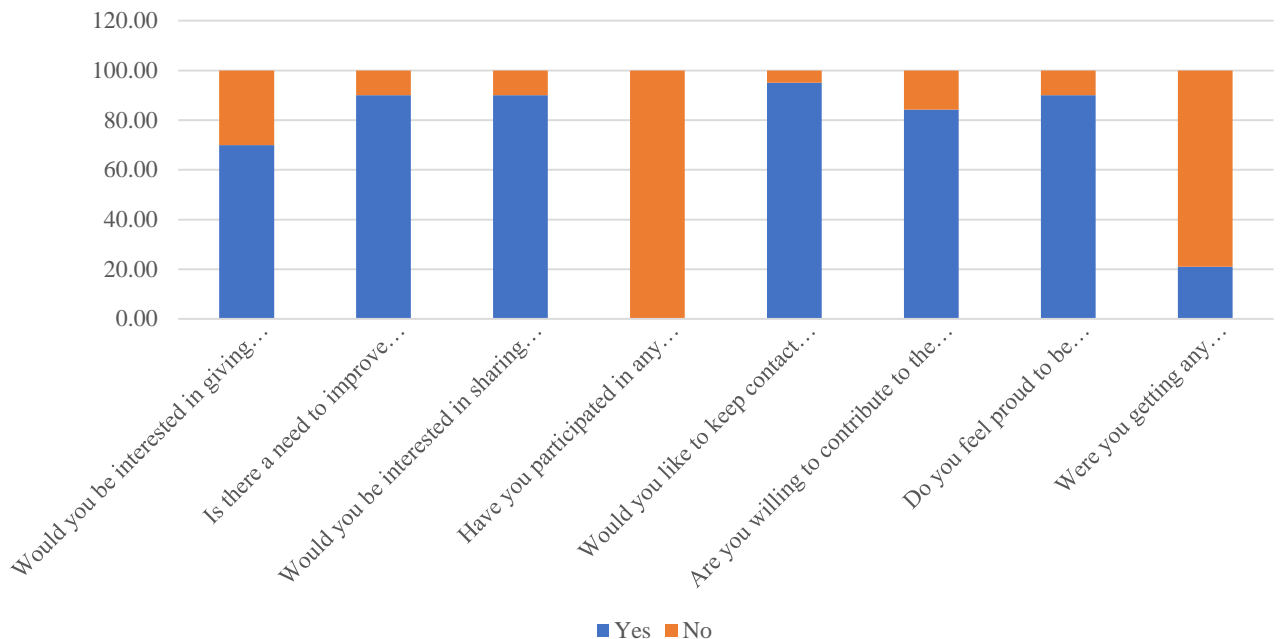
Set-I

Department of Electrical Engineering



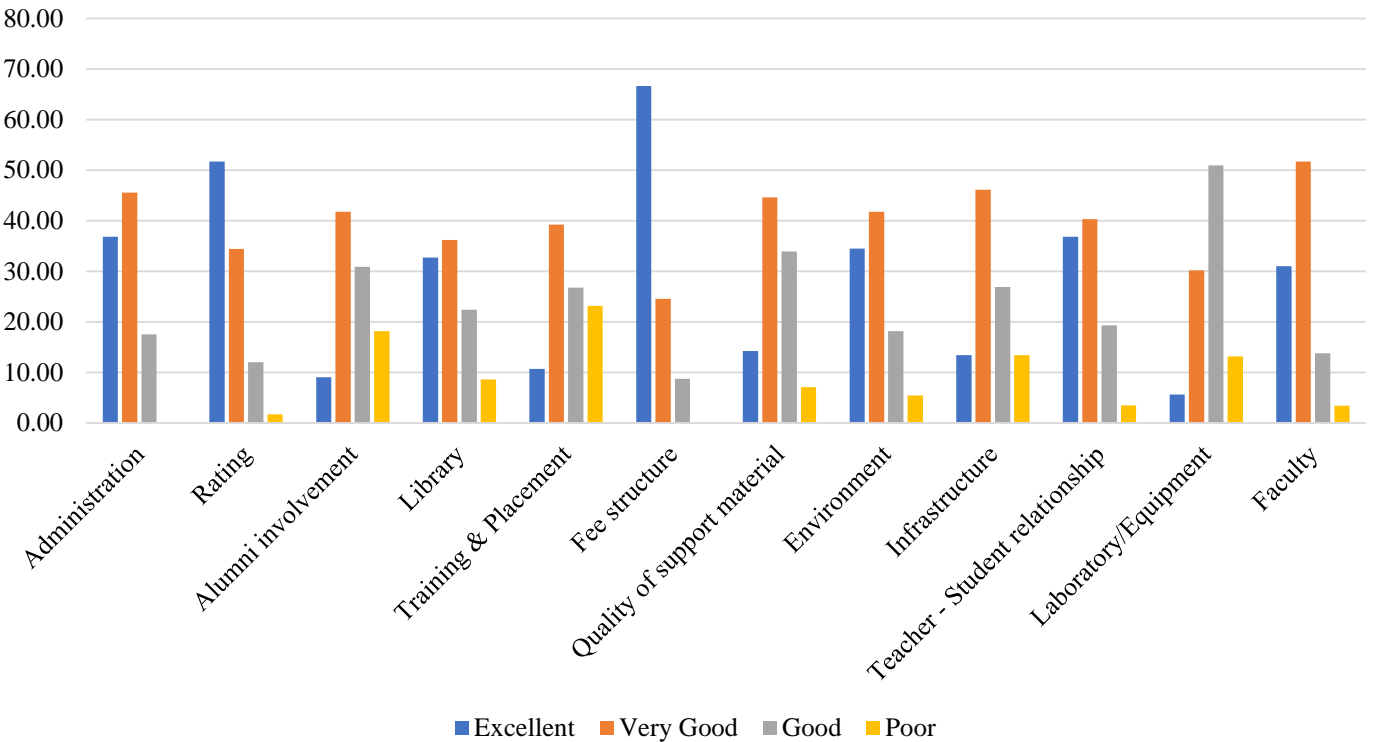
Set-II

Department of Electrical Engineering



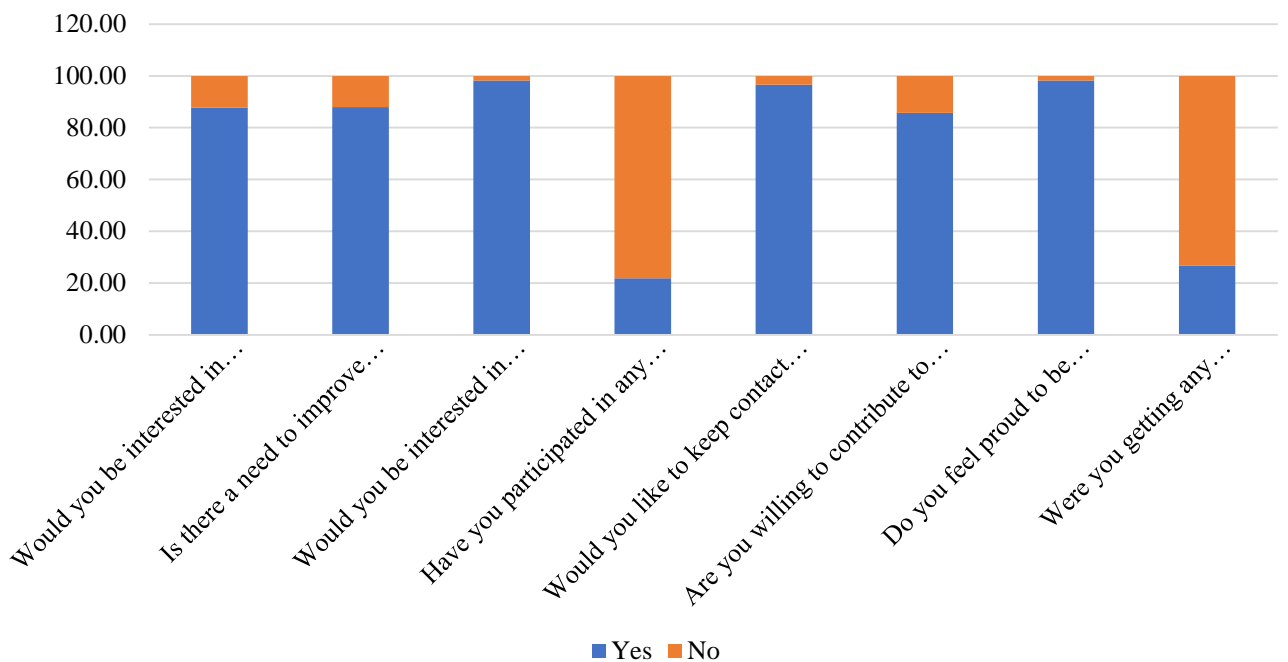
Set-I

Department of Educational Studies



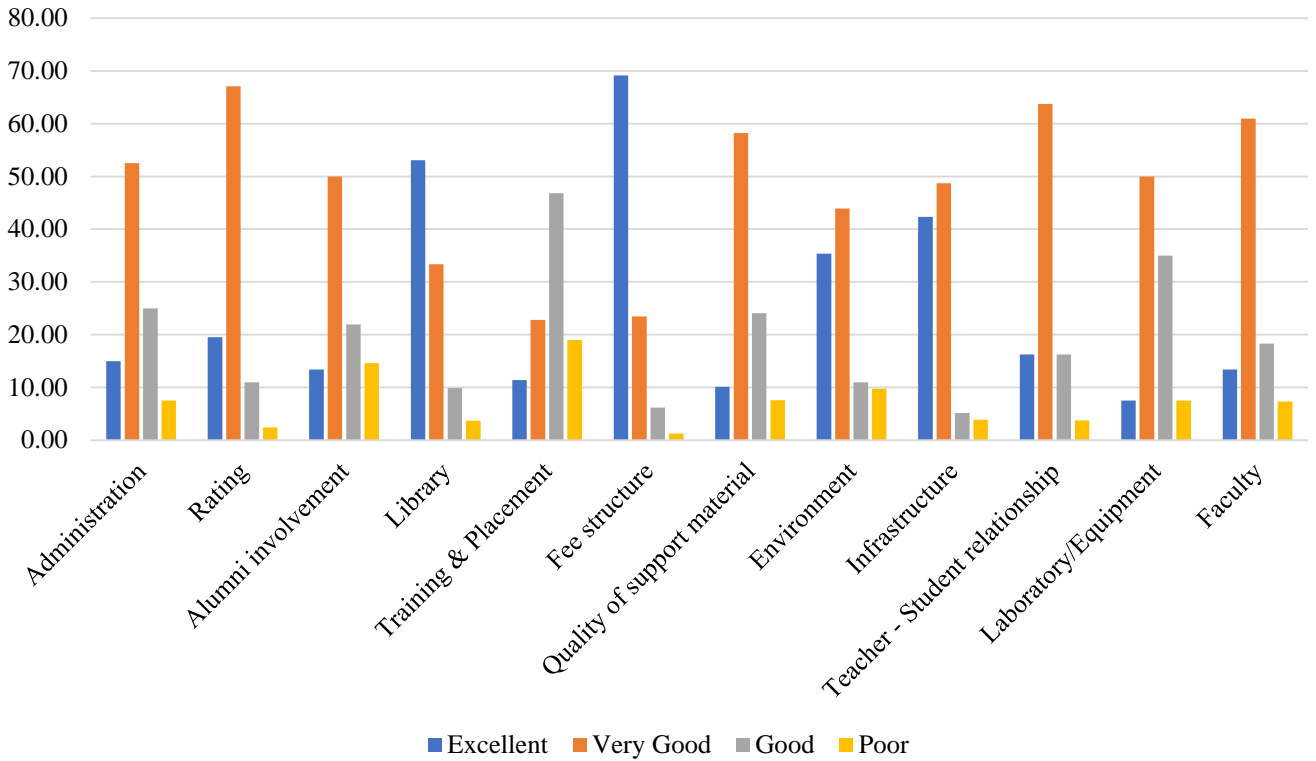
Set-II

Department of Educational Studies



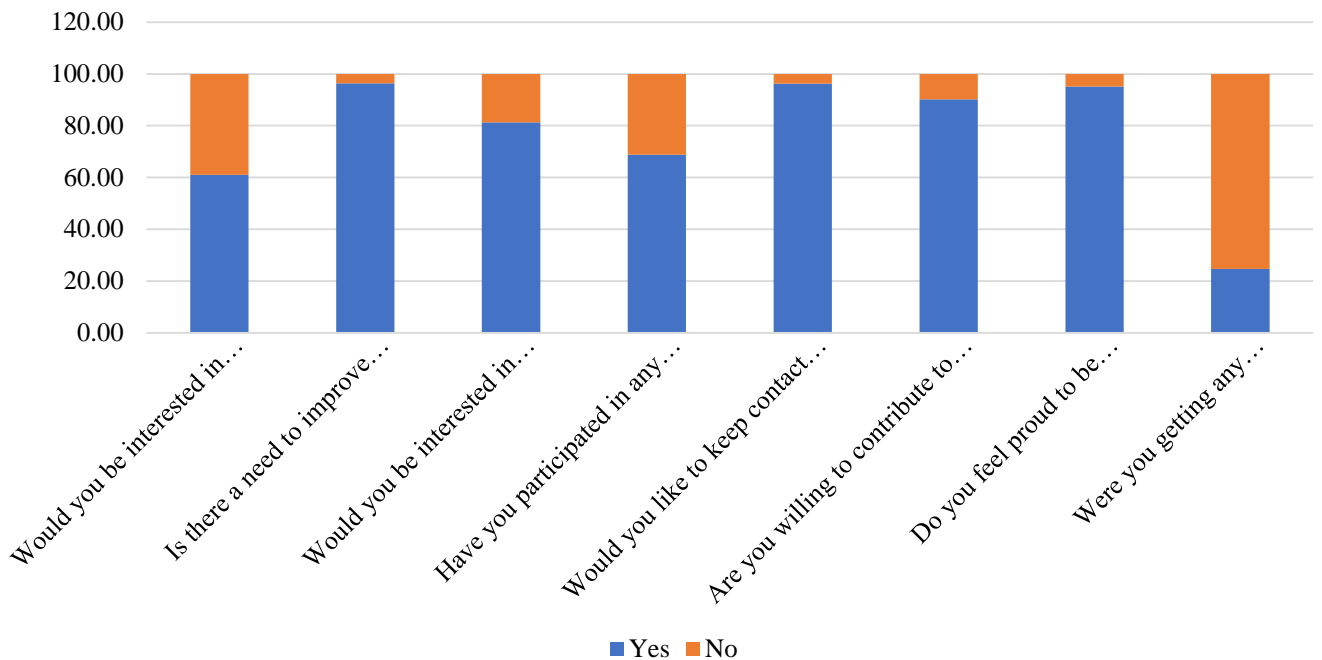
Set-I

Department of Economics



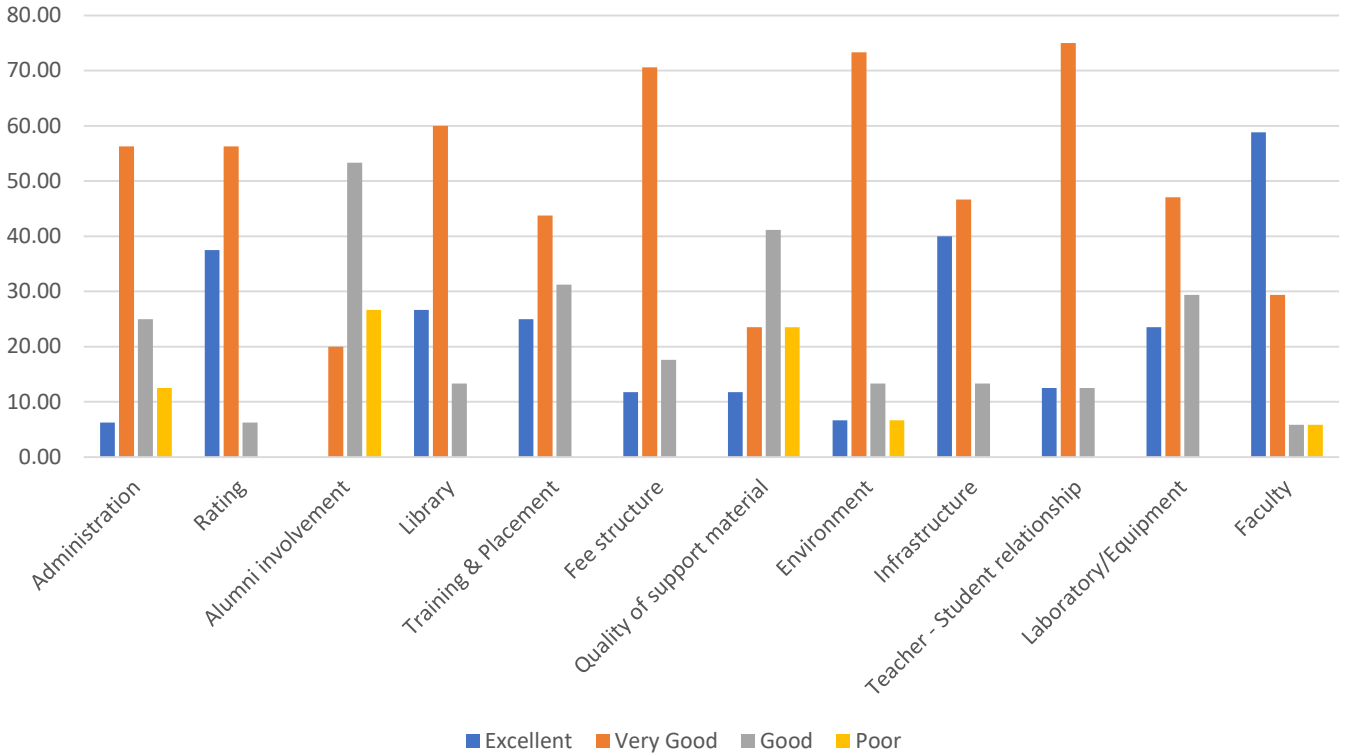
Set-II

Department of Economics



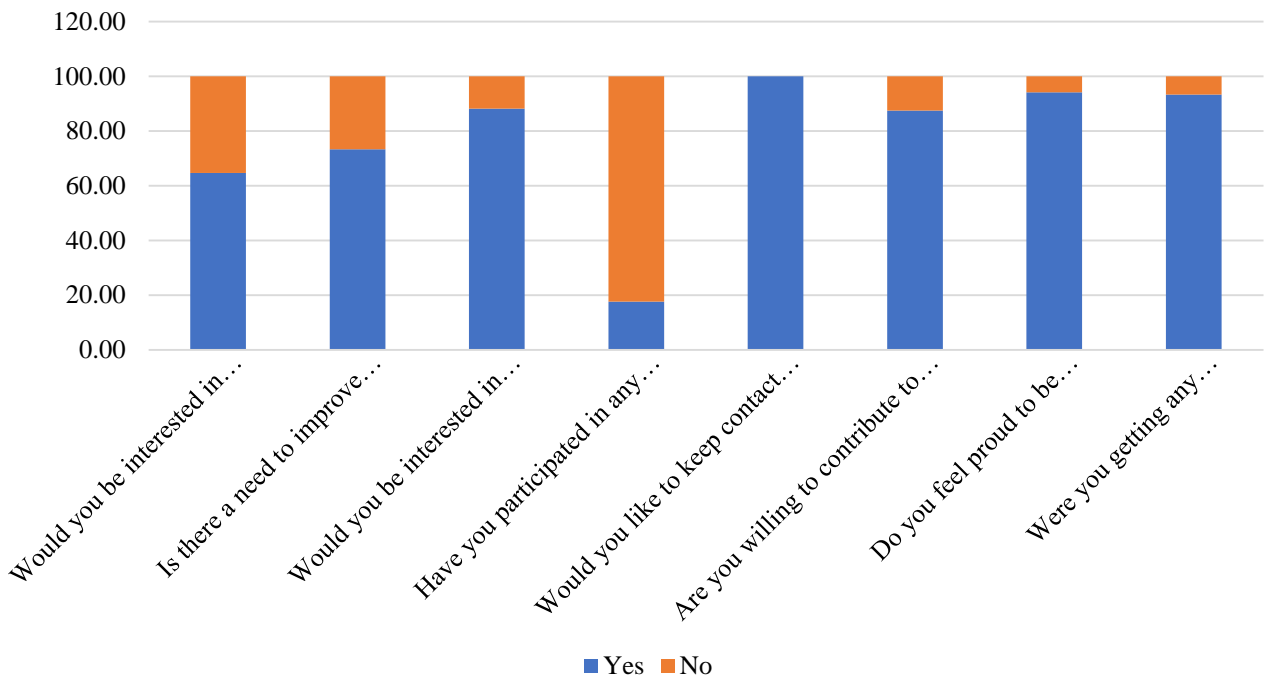
Set-I

Faculty of Dentistry



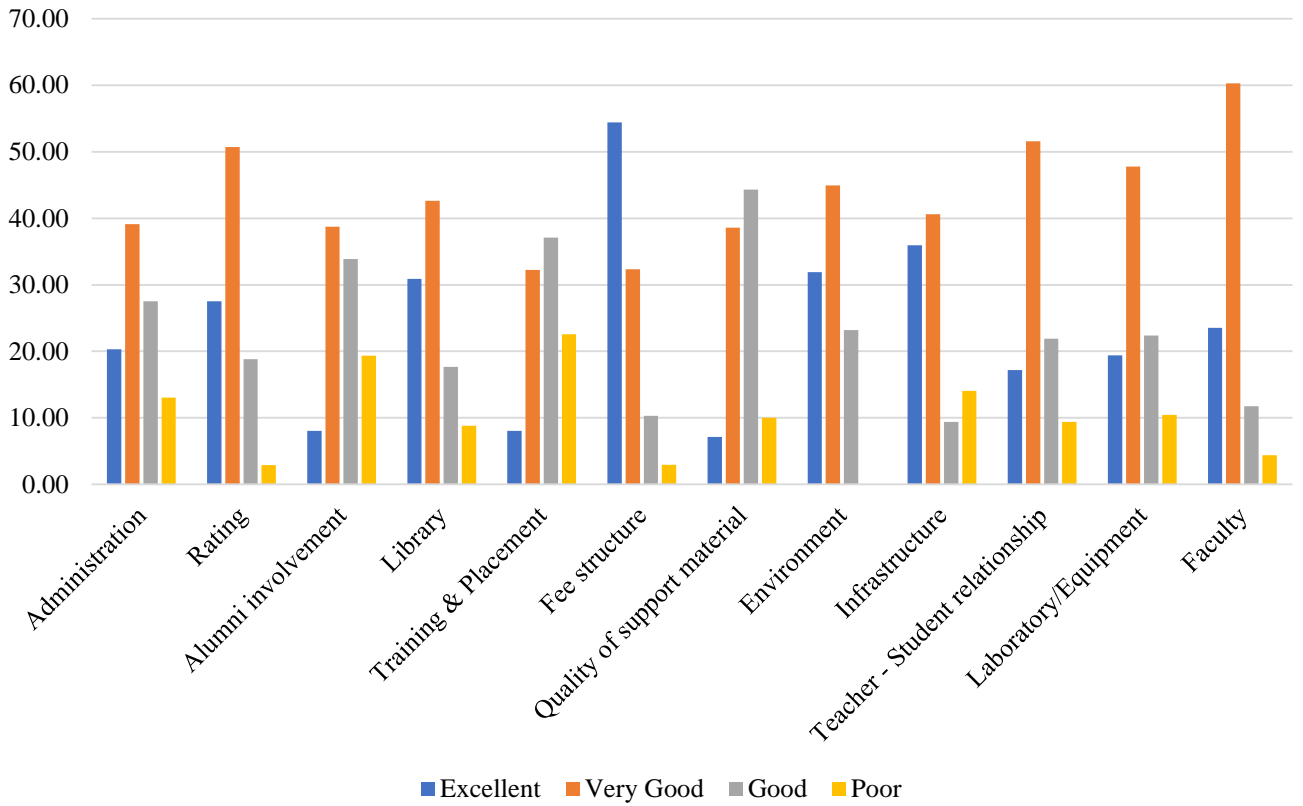
Set-II

Faculty of Dentistry



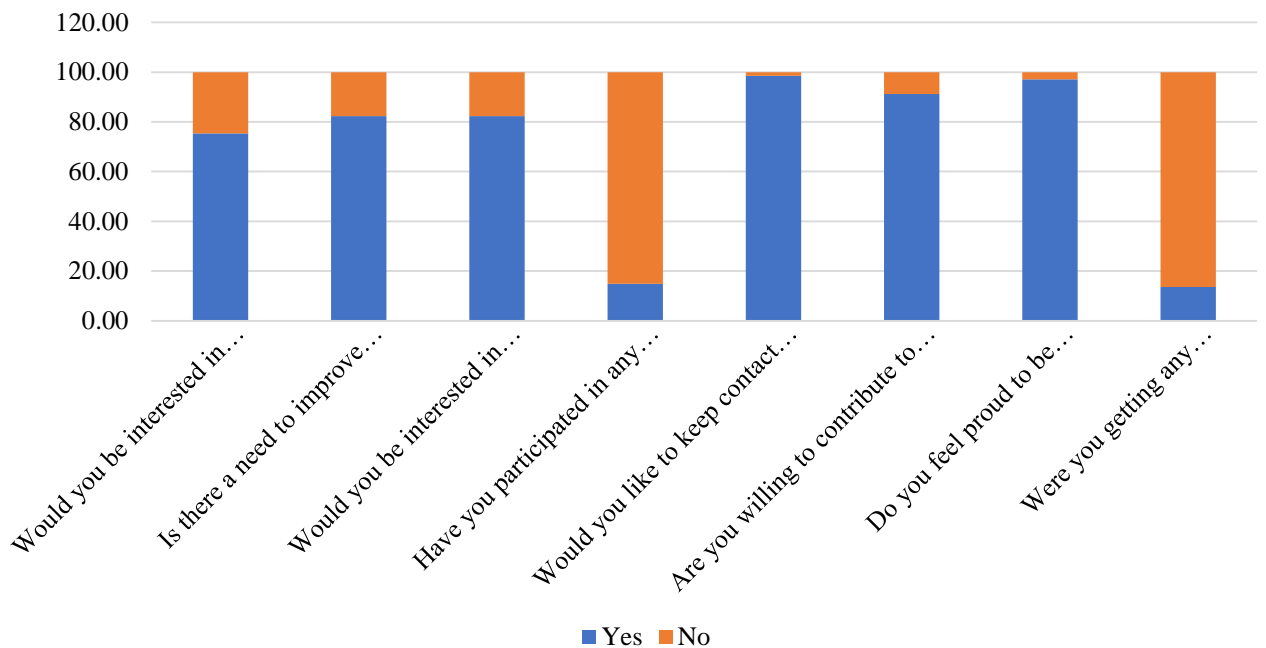
Set-I

Department of Bioscience



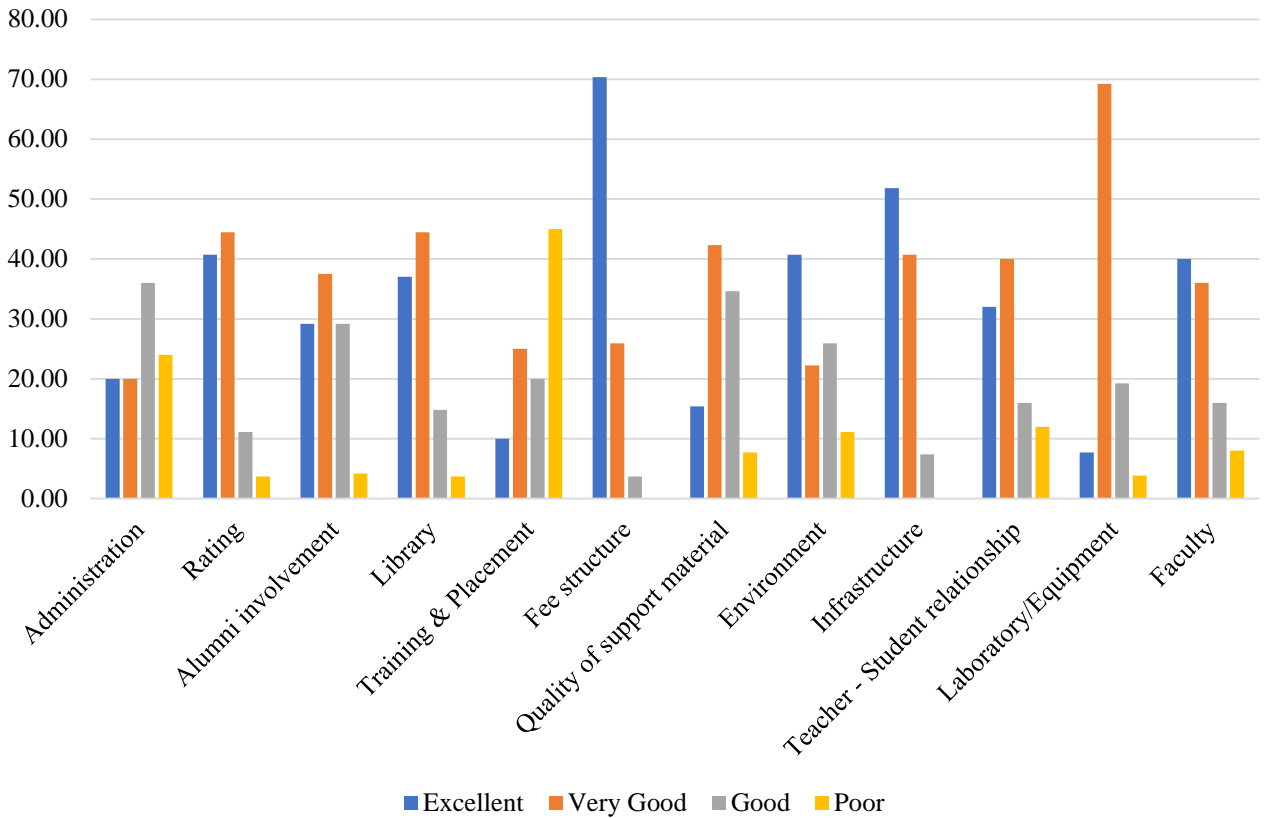
Set-II

Department of Bioscience



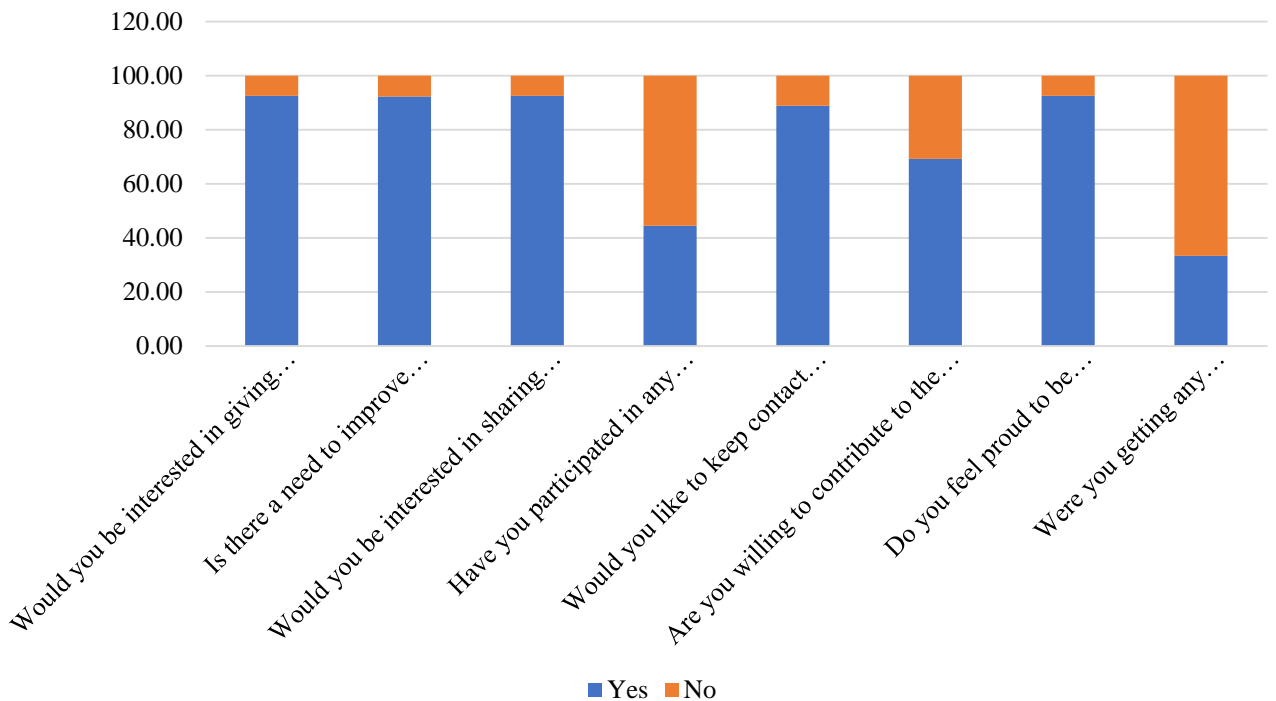
Set-I

Department of Art Education



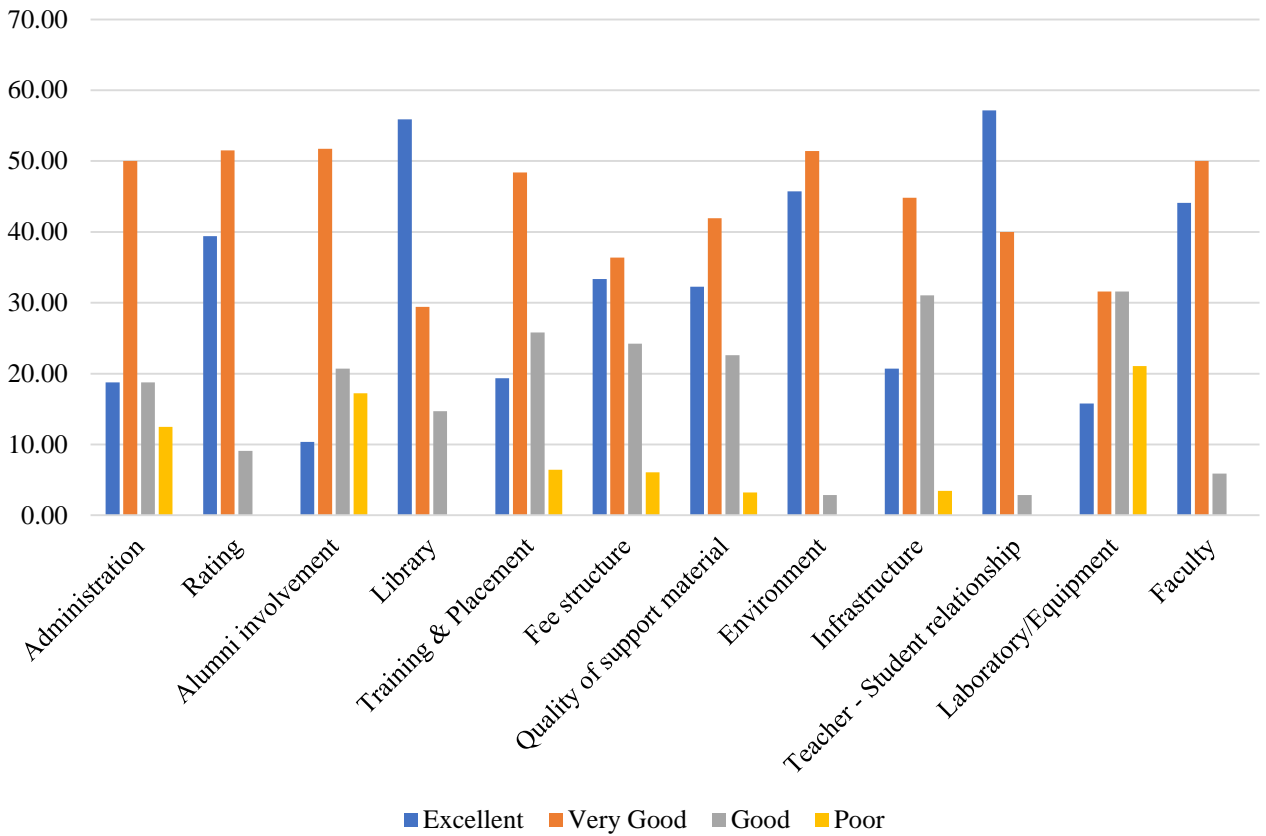
Set-II

Department of Art Education



Set-I

Department of Arabic



Set-II

Department of Arabic

